



A Picture of Pacific Health

Using Data to make a difference

PMA Conference 2017

New Caledonia



A Picture of Pacific Health

Using Data to make a difference

- **Largest PHO in NZ:**
 - 175 practices, ~600 GPs
 - ~ 811,000 enrolled patients
 - 49% Auckland regional DHB pop (1,632,100)
 - 17.3% NZ 2016 usually resident pop (4,693,000)
 - Higher Asian (115k) and Pacific (109k), than Māori (90k)

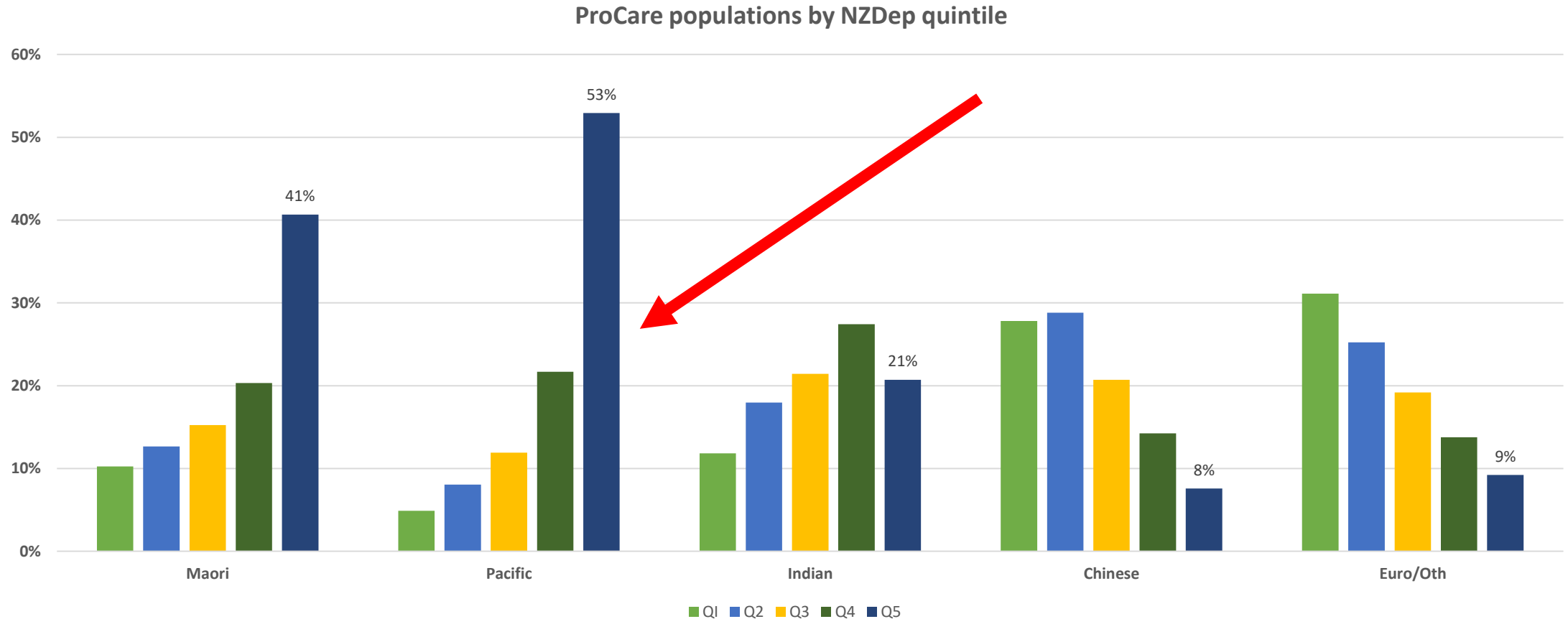
Ethnic Group	Total ProCare 1 Jan 2017 N=810,715 N (%)
Māori	89,912 (11%)
Pacific	109,239 (13%)
Indian	62,072(7.5%)
Chinese	53,618 (6.5%)
European/Other	509,894 (62%)



Pacific population

Ethnic Group		ProCare enrolled population as at 1 Jan 2017
Pacific	Samoan	47,606
	Cook	16,445
	Tongan	21,335
	Niuean	6,487
	Tokelauan	607
	Fijian	11,079
	Other Pacific	5,680

Socio-economic deprivation



57% Euro/Other quintiles 1 and 2 (least deprived)

61% Māori and 75% Pacific peoples quintiles 4 and 5 (most deprived)

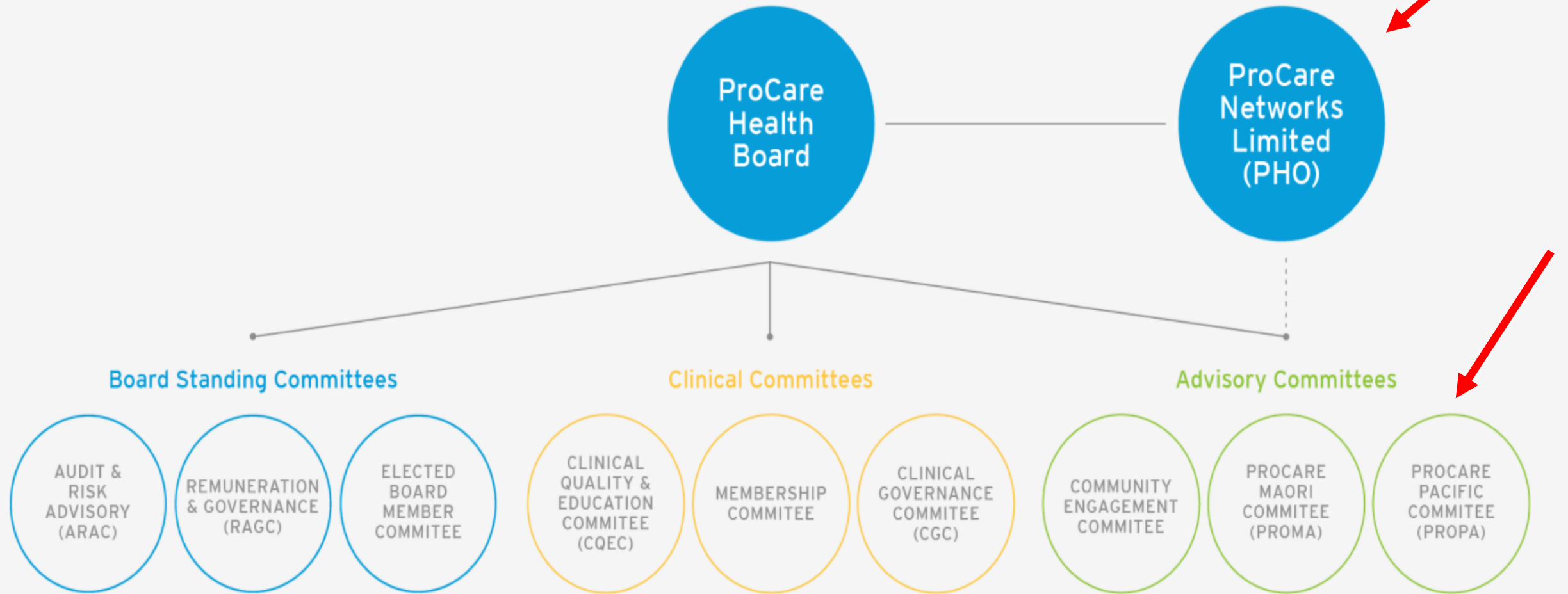
Who does not visit their practice in 2 years?

% of patients who have not seen their GP in two years by age group and priority ethnic group

Age Group	Maori	Pacific	Q5	Chinese (Q1-4)	Indian Q1-4	European / Other (Q1-4)
00-01	71% 29%	74% 26%	73% 27%	70% 30%	74% 26%	74% 26%
02-04	83% 17%	85% 15%	87% 13%	86% 14%	89% 11%	88% 12%
05-14	76% 24%	76% 24%	80% 20%	76% 24%	85% 15%	79% 21%
15-24	70% 30%	68% 32%	70% 30%	62% 38%	75% 25%	76% 24%
25-44	76% 24%	77% 23%	76% 24%	66% 34%	77% 23%	76% 24%
45-64	86% 14%	87% 13%	86% 14%	75% 25%	90% 10%	86% 14%
65+	92% 8%	90% 10%	91% 9%	84% 16%	91% 9%	92% 8%
Grand Total	78% 22%	78% 22%	81% 19%	73% 27%	82% 18%	82% 18%

- 161,398 (19.5%) of the population do not have a recorded visit in the previous two years
- **By ethnicity, over one in four Chinese (27%) had not visited their doctor in the previous two years along with 22% of enrolled Maori and Pacific patients.**

PROCARE GOVERNANCE AND ADVISORY





ProCare – Addressing Equity

- Dr Minnie Strickland –Associate Clinical Director (Pacific Equity focus)
- Paula Takiwa – Pacific Project Manager
- Viviana Pole – Pacific Community Engagement & Strategy Advisor

ProCARE Outcomes Quality Framework - Pacific Focus

OUTCOMES & QUALITY FRAMEWORK: (All) - 31 August 2017

Version:1.3

NATIONAL INTEGRATED PERFORMANCE INCENTIVE FRAMEWORK (IPIF)				THIS MONTH	TO DO	CHANGE	MĀORI		PACIFIC		Q5
							Result	ToDo	Result	ToDo	Result
95% Fully immunised children aged 2 years *	High Needs	89%		72	1%	↑	86%	47	91%	23	
	Total Pop.	90%		132	1%	↑					
95% Fully immunised children aged 8 months *		92%		39	4%	↑	89%	26	92%	12	
		93%		56	3%	↑					
80% Up to date cervical smear result *		75%		4,065	0%	→	74%	1,330	72%	2,090	
		80%		713	0%	→					
90% Smokers who received brief advice to stop in the past 15 months		87%		1,517	4%	↑					
		87%		2,907	4%	↑					
90% Patients who have had a CVD risk assessment in the last 5 years		89%		766	1%	↑					
		90%		0	1%	↑					

ProCARE Outcomes Quality Framework - Pacific Focus

CLINICAL INDICATORS - LONG TERM CONDITIONS MANAGEMENT - DIABETES

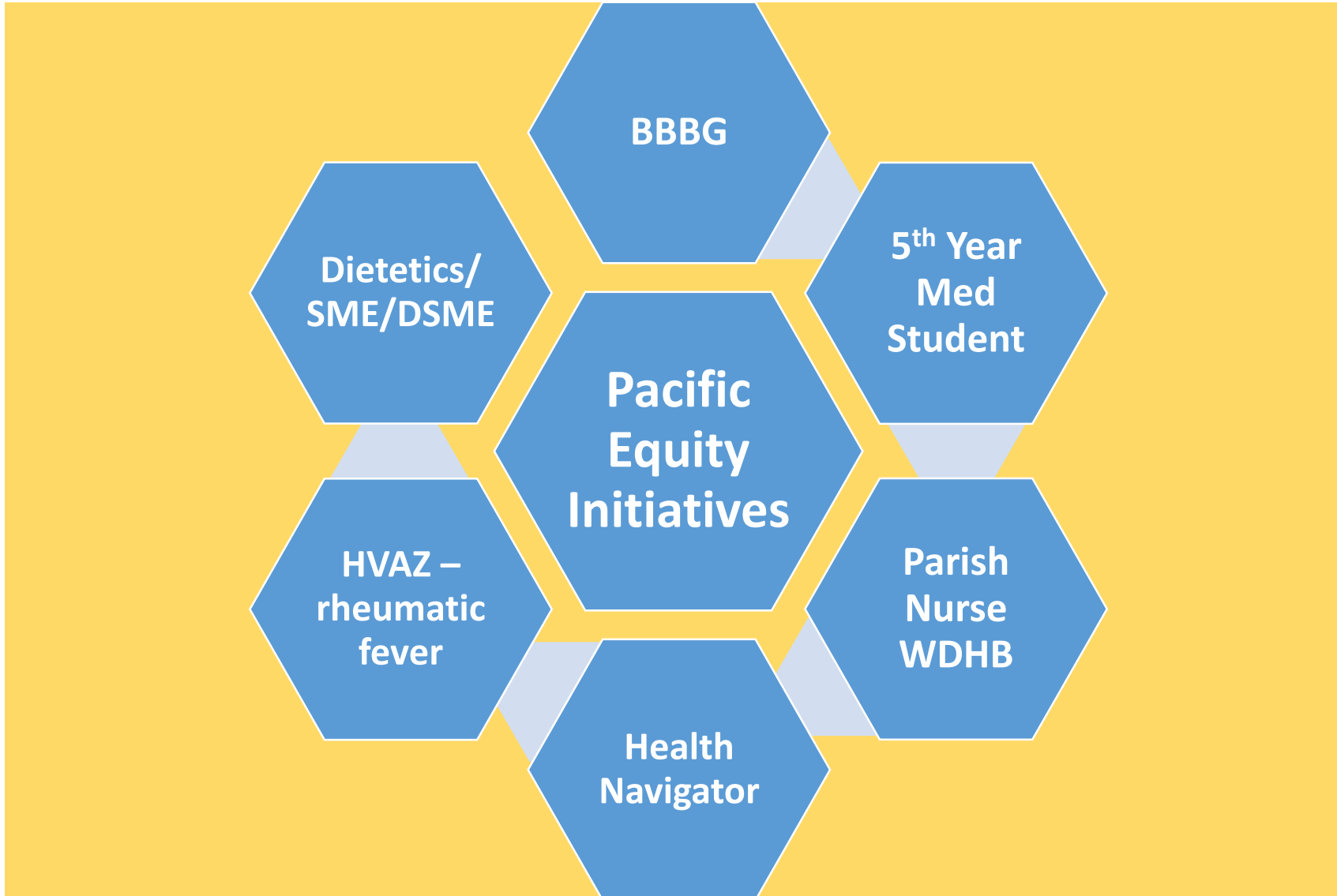
80% HbA1c Glycaemic control (HbA1c <64)	<div><div></div></div> 53%	50%757	51%1,489
80% Blood pressure control (systolic <140)	<div><div></div></div> 63%	60%416	63%626
90% Management of Microalbuminuria (on an ACEi or ARB)	<div><div></div></div> 76%	73%63	77%51

CLINICAL INDICATORS - LONG TERM CONDITIONS MANAGEMENT - CVD

70% Secondary Prevention - Triple Therapy	<div><div></div></div> 59%	56%57	60%0
70% Primary Prevention - Dual Therapy (For >20% CVD Risk)	<div><div></div></div> 50%	47%64	51%25

CLINICAL INDICATORS - OTHER

75% Influenza Vaccination aged 65 and over**	<div><div></div></div> 62%	61%684	65%811
----------------------------------------------	----------------------------	--------	--------



Pacific Health Strategy

Workforce

**Engaging Pacific
Cultural
Competency**

Equity gaps

Equity Project 1

Diabetes

**Newly
diagnosed /
Poor
controlled**

Equity Project 2

**Off The
Couch**

**Co-
morbidities
Obesity**